

Product of choice for a multitude of residential, commercial and industrial lighting applications, our 12 V transformer is the most efficient compact-sized lighting transformer on the market today. Rated for both outdoor and indoor use, our solution is designed to respond to the lighting industry's new energy and reliability requirements.

### BEFORE YOU BEGIN

- Verify the label to ensure your product has the proper input voltage and wattage specification for its usage.
- Ensure your product wire markings match the MX LIGHTFORCE 12 V AC wiring diagram.

**12 V  
AC**

| 150 W - 300 W |

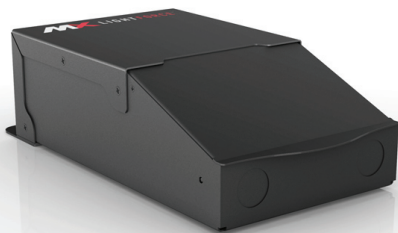
| DIMMABLE |

| INDOOR  
OUTDOOR |



### STEP 1 MOUNTING

- Install the lighting transformer vertically with the junction box pointing down as shown in diagram.
- Use the two keyholes to mount the product on a backing capable of supporting its weight.
- Open the hinged door
- Punch the knockouts and install strain reliefs.



Lighting Transformer 150 - 300 W

### STEP 2 CONNECT

For all wire connections use only UL listed wire nuts and connectors of proper size and type.

- Turn power off.
- Route the input wires through a strain relief.
- Connect BLACK and WHITE wires to the 120 V AC line
- Bring the light fixture wires through the open knockout.
- Connect the light fixture wires to the BLUE and BROWN wires.
- Connect the ground wire to the transformer GREEN wire.
- Check that the GRAY wire has a Cap if you don't use the Boost Tap.

#### TO INSTALL USING TAP (10% BOOST)

- Remove Orange wire cap from the GRAY wire and screw it on the BROWN wire.
- Connect the light fixture wires to the BLUE and GRAY wires.

## IMPORTANT

#### lighting transformer must be:

- **installed by qualified electricians** and in accordance with Article 450 of the National Electric Code.
- **installed in a well-ventilated area**, free from explosive gases and vapors. Proper operation requires for free flow of air.
- **grounded** in accordance with the National Electric Code.
- **connected** to the load before applying input power (120V AC) when used with MLV TRIAC dimmers or dimmers may not function properly.

